



**PH
AID**

2011

HIQ
CIA



MEDICAL PRODUCTS



Index

Health care

- 4-5 Pillboxes
- 6-7 Plasters
- 8-9 Soap bottles
- 10-13 Sachets & wet wipes
- 14-15 Small tubes, phials & glass flasks
- 16-17 Wet wipes
- 18-21 Tissues, gloves & faces mask
- 22-23 First aid kits

Diagnostic

- 24-25 Penlights
- 26-27 Diagnostic sets
- 28-33 Tongue depressors, ear-tips & thermometers
- 34-35 Monofilament
- 36-37 BMI rulers & meters (endocrinology)
- 38-39 Sthetoscope accessories

Medical specialities

- 40-43 Traumatology
 - Rulers, hammers, x-ray marker, ...
- 44-45 Cardiology
 - Rulers & calipers
- 46-50 Pediatrics
 - Meters, thermometer, bibs, scale protector, ...
- 51 Dermatology
- 52-55 Nursing
- 56-57 Oftalmology
- 58 Veterinary
- 59 Dentist
- 60 Spirometry
- 61 Ginecology
- 62 Measurement calculators
- 63 Anatomical models
- 64-66 Medical items & Surgical

Health Care



443-3



440



445



446



441



442

440

Oval pillbox: 2 Compartments

Pastillero ovalado: 2 Compartimentos

Size: 60x36x13mm

441

Pillbox 4 in 1: Crushes pills or tablets, split any size

pill or tablet, dual compartments, drinking cup

Pastillero 4 funciones: Triturar pastillas, corta pastillas, dos

compartimentos, cavidad para tomar la pastilla

Size: ø 40x65mm

442

Pillbox with cutter: Split any size pill or tablet.

Dual compartments

Pastillero con cutter: Corta pastillas. Dos compartimentos

Size: ø 68x20mm

443-3

Daily pillbox: 3 Compartments: breakfast, lunch & dinner

Pastillero diario: Tres cavidades: desayuno, comida y cena

Size: 56x30x13mm

445

Round pillbox: 3 Compartments

Pastillero redondo: 3 Compartimentos

Size: ø75x17mm

446

Heart pillbox: 1 or 2 compartments at your choice

Pastillero corazón: Escoger 1 o 2 compartimentos

Size: 78x70x20mm

Pill Boxes

Health Care



444



443



449



443-2



443-4

443

Weekly pillbox: 7 compartments
Pastillero semanal: 7 compartimentos, uno para cada día

Size: 123x27x15mm

443-2

Fortnightly pillbox: 14 compartments
Pastillero quincenal: 14 cavidades

Size: 128x62x18mm

443-4

Monthly pillbox: 28 compartments: 4 weeks
Pastillero mensual: 28 cavidades: 4 semanas

Size: 128x62x34mm

444

Square pillbox: 4 compartments
Pastillero cuadrado: 4 compartimentos

Size: 59x59x17mm

449

Empty Pillbox
Pastillero para blister. Vacío

Size: 97x55x10mm

European quality
CALIDAD EUROPEA



HEALTH CARE

DIAGNOSTIC

MEDICAL SPECIALITIES

449-10P

Handy & Refilable:

10 plasters, size: 70x20mm

10 tiritas, size 70x20mm

Box size: 54x10x97mm

CD-15

Dispenser box: 15 plasters, size 70x20mm

Caja dispensadora: 15 tiritas, medidas 70x20mm

Box size: 95x42x30mm

STN-60

Mini Sleeve. 5 nasal strips

5 tiritas nasales

Box size: 80x70mm

E-10T

Handy & Refilable:

10 plasters, size: 70x20mm

Estuche recargable: 10 tiritas, size 70x20mm

Size: 35x15x82mm

F25-TT

Plastic sleeve: 10 plasters, size: 70x20mm

Carterita plástico: 10 tiritas, size 70x20mm

Box size: 95x5x63mm

CD-15



E-10T



F25-TT



STN-60



449-10P



Plasters



ST-10

Small plastic pouch:
10 plasters, size: 70x20mm
10 tiritas, size 70x20mm
Box size: 93x3x63mm

ST-20

Plastic pouch: 20 plasters, size: 70x20mm
20 tiritas, size 70x20mm
Box size: 120x3x95mm

TI-300

Plasters for everyday minor injuries
Printing in 1 to 4 colours
Air permeability
Hypoallergenic
Plasters sizes: 70x20mm
Other sizes on request
Plasters individually sealed
Tiritas para pequeñas heridas
Impresión de 1 a 4 colores
Transpirable
Hipoalérgicas
Medidas: 70x20mm
Consultar otras medidas
Envoltorio individual

ST-10



ST-20



Continued printing
IMPRESIÓN EN CONTINUO

European quality
CALIDAD EUROPEA



DB-735

Bottle with antibacterial gel.
Capacity: 125ml
Botella con gel antibacteriano.
Contenido: 125ml
Size: Ø53x102mm

DB-740A

Bottle with antibacterial gel.
Capacity: 150ml
Botella con gel antibacteriano
Contenido: 150ml
Size: Ø53x102mm

DB-740

Bottle soap dispenser.
Capacity: 150ml
Botella dispensadora de jabón
Contenido: 150ml
Size: Ø53x102mm.

Certified in compliance
with CE norms
CUMPLE LA NORMATIVA EUROPEA



DB-740



DB-740A



DB-735



ciflot
ciprofloxacina 0,3%



Soap

DJ-750



DJ-418



DP-715
DP-716



Health Care

DP-715

Aspirin soap dispenser -empty-
Capacity: 150ml.
Aspirina dispensadora de jabón (vacía)
Capacidad: 150ml.
Mds/Size: 90 x 37 x 132 mm. 150ml.

DP-716

Aspirin soap dispenser with soap
Capacity: 150ml.
Aspirina dispensadora de jabón
Contenido: 150ml.
Mds/Size: 90 x 37 x 132 mm. 150ml.

DJ-418

Capsule soap dispenser with soap
Capacity: 150ml.
Cápsula dispensadora de jabón
Contenido: 150ml.
Mds/Size: ø 64 x 175mm. 150ml.

DJ-750

Syringe soap dispenser with soap
Capacity: 500ml.
Jeringuilla dispensadora de jabón
Contenido: 500ml.
Mds/Size: ø 65 x 200 mm. 500ml.



HEALTH CARE

DIAGNOSTIC

MEDICAL SPECIALTIES

Type of materials TIPOS DE MATERIALES

S-200

Hygienic soap wet wipe
Toallita jabonosa para las manos

Size: 60x80mm

S-205

Hygienic scented wet wipe
Toallita perfumada

Size: 60x80mm

S-210

Alcohol wipe
Toallita de alcohol

Size: 60x80mm

S-215

Antibacterial gel
Sobre con jabón antibacteriano

Size: 60x80mm

S-230

Glasses cleaner wet wipe
Toallita limpiagafas

Size: 60x80mm

Anti Mosquito wipe
Povidone wipe
Moisturising hand cream, ...
TOALLITA REPELENTE MOSQUITOS
TOALLITA POVIDONA IODADA
SOBRE CREMA HIDRATANTE, ...

Individually packed in
sealed sleeves
In bulk or in boxes
Sizes of sachet:
EMBASADO INDIVIDUAL, A GRANEL
O EN CAJA, MEDIDAS SOBRES:
80x60 mm
70x75mm
50x55mm



Sachets & Wipes



Health Care

Format FORMATOS

Single used
SOBRES UNIDOSIS
80x60 mm
70x75mm
50x55mm

Duplex: SOBRES DOBLES:

You can put:
Different products on each sachet
First sachet with product
or other vacuum with advertising
Same product in both sachets
*Se puede poner:
Diferente producto en cada sobre
Un sobre con producto y el otro vacío con publicidad
Mismo producto en ambos sobres*

Personalized shapes FORMAS PERSONALIZADAS

Foot, tube
Pie, tubo

Certified in compliance
with CE norms
CUMPLE NORMATIVA EUROPEA

HEALTH CARE

DIAGNOSTIC

MEDICAL SPECIALITIES

CS-10

Box with 5 sachets or wet wipes

Caja con 5 sachets o toallitas

Sachet size: 60x80mm

Size: 83x60x20mm

CS-15

Box with 10 sachets or wet wipes

Caja con 10 sachets o toallitas

Sachet size: 60x80mm

Size: 83x63x40mm

CS-30

Box with 10 sachets or wet wipes

Caja con 10 sachets o toallitas

Sachet size: 50x55mm

Size: 73x63x33mm

CD-200

Dispenser box with 10 sachets or wet wipes

Caja dispensadora con 10 sachets o toallitas

Sachet size: 60x80mm

Size: 83x60x20mm

F25-S

Plastic pouch with 4 sachets or wet wipes

Funda de plástico con 4 sachets o toallitas

Sachet size: 60x80mm or 50x55mm

CS-15



CS-30



CS-10



CD-200



F25-S



Sachets & Wipes

Health Care

Packaging PRESENTACIÓN

Flow-pack FLOW-PACK

Transparent film: neutral or printed from 1 up to 4 colors- Opaque film: neutral or printed from 1 up to 4 colors
 Film transparente, neutro o grabado desde 1 hasta 4 colores
 Film opaco, grabado desde 1 hasta 4 colores

Diptics, triptics DÍPTICOS, TRÍPTICOS

Different sizes
 1, 2 or 3 sachets
 Diferentes tamaños
 Con 1, 2 o 3 sobres

OTHER FILLING CONTENTS ON REQUEST CONSULTAR OTRAS POSIBLES PRESENTACIONES Y EMBALAJES



Phials

VIALES

Hand cream, Hair treatment, Shower gel, shampoo, Body milk, ...

Crema de la mano, Productos capilares, Gel de ducha, champú, Leche corporal, ...

Capacity: 1,5ml or 11ml

Small tubes

TUBITOS

Hand cream, Lib balm, Shower gel, Shampoo, Body milk, ...

Crema de la mano, Protector labios, Gel de ducha, champú, Leche corporal, ...

Capacity: 4ml or 7ml

Dermatologically tested

OTHER FILLING CONTENTS ON REQUEST

Probado dermatológicamente

PARA OTROS CONTENIDOS CONSULTAR

Certified in compliance with CE norms

CUMPLE NORMATIVA EUROPEA

MC-110B

MC-70

MC-110



MC-50



MC-30



MC-15



TM-34R

TM-32



TM-36B



Deodorant Spray
Mild deodorant with high effectiveness. Neutral PH.
DESODORANTE EN SPRAY. PH NEUTRO

Eau de Toilette Spray
Fresh pleasing fragrance for him and her
AGUA DE COLONIA EN
SPRAY FRESCA FRAGANCIA
AGRADABLE PARA ÉL Y PARA ELLA

Breath Spray
A fresh breath anytime, anywhere
SPRAY PARA EL ALIENTO
UN ALIENTO FRESCO EN CUALQUIER
MOMENTO Y EN CUALQUIER LUGAR

Hand Cleaning Spray
detergent and disinfectant
SPRAY PARA LIMPIAR LAS MANOS
DETERGENTE Y DESINFECTANTE

Small glass flask, different sizes from 60xØ9mm to 125xØ13 mm (to select)
Capacity from 1,5 ml to 10 ml (to select)
FRASCO DE VIDRIO DE DIFERENTES
TAMAÑOS DESDE 60XØ9MM
HASTA 125XØ13 MM (A ESCOGER)
CAPACIDAD DESDE 1,5ML HASTA 10ML

Dermatologically tested
PROBADO DERMATOLÓGICAMENTE

Other filling contents on request
OTROS CONTENIDOS DE
LLENADO SEGÚN SOLICITUD

TB-10

Wet wipes pack (10units)

Pack toallitas (10 unidades)

Size: 145x70x12mm

TB-15

Wet wipes pack (15units)

Pack toallitas (15 unidades)

Size: 140x78x25mm

TB-20

Wet wipes pack (20units)

Pack toallitas (20 unidades)

Size: 160x100x30mm

Contents: Fresh wipes,
Intimate wipes, Make-up
remover, Baby soft, Lens
cleaner, Desinfectant, ...

CONTENIDO DE LAS TOALLITAS:

REFRESCANTES, INTIMAS,
DESMAQUILLANTES, BEBES SUAVES,
LIMPIA GAFAS, DESINFECTANTES, ...

Certified in compliance
with CE norms

CUMPLE NORMATIVA EUROPEA

TB-10



TB-15



TB-20



Wet wipes

BT-90



TC-1



GM-33S



GM-31

GL-70



Health Care

BT-90

Cold Bandages dispenser
Ideal improve blade circulation
Bote dispensador vendas frías
Ideal para problemas de circulación
Size: Ø80x165mm

TC-1

Wet wipes pack (1unit)
Pack toallita (1 unidad)
Wipe size: 240x190mm
Size: 150x70x3mm

GM-31

Body glove 2 sides:
wet with soap or cream/dry off
Guante húmedo de un lado y seco del otro
Se utiliza para limpiar partes del cuerpo

GM-33S

Dry body glove applicable for soap & water
Guante seco para aplicar agua y jabón
Se utiliza para limpiar partes del cuerpo

GL-70

MAGIC TOUCH
TOQUE MÁGICO

How to use it:
Draw over like a glove.
Remove backing paper
on backside of the pouch.
Pick up dust, fluff, etc. By repeated
touching with adhesive side of the pouch.
Cómo utilizarlo:
Ponerse el guante y quitar la protección.
Quitar las pelusas y polvo con la parte adhesiva.

CK-400

Nose box with 50 tissues
Caja nariz con 50 pañuelos
Size: 170x152x35mm

CK-404

Box with 50 tissues
Caja con 50 pañuelos
Size: 145x110x26mm

CK-404GL

Box with 15 gloves
Caja con 15 guantes
Size: 145x110x26mm

CP-225

Frosted tissue pocket box (10 tissues)
Caja translúcida de bolsillo (10 pañuelos)
Size: 55x115x30mm

CP-228

Pocket box with 10 tissues
Caja de bolsillo con 10 pañuelos
Size: 55x115x30mm

10200

Box with 25 tissues
Caja con 25 pañuelos
Size: 150x70x35mm

Soft tissues boxes (2 plies)
Boxes of latex gloves,
vinyl or nitrile
CAJAS DE PAÑUELOS EXTRA SUAVES
(DOBLE CAPA). CAJAS CON GUANTES
DE LÁTEX, VINILO O NITRILLO.

CP-228



CP-225



10200



CK-404



CK-404GL



CK-400



Tissues & Gloves



1385

1386-PP

1320

1386-GL

1380

10350

1320

Box with 50 tissues
Caja con 50 pañuelos
Size: 100x100x100mm

1385

Box with 50 tissues
Caja con 50 pañuelos
Size: 108x80x120mm

1385-GL

Box with gloves
Caja con guantes
Size: 108x80x120mm

1386-PP

Box with 50 tissues
Caja con 50 pañuelos
Size: 115x115x115mm

1386-GL

Box with 25 gloves
Caja con 25 guantes
Size: 115x115x115mm

1380

Box with 50 tissues
Caja con 50 pañuelos
Size: 105x92mm

10250

Box with 50 tissues
Caja con 50 pañuelos
Size: 105x63mm

10350

Box with gloves
Caja con guantes
Size: 105x63mm

Soft tissues
boxes (2 plies).
Boxes of latex
gloves, vinyl or nitrile
CAJAS DE PAÑUELOS EXTRA
SUAVES (DOBLE CAPA).
CAJAS CON GUANTES DE
LÁTEX, VINILO O NITRILO.

1375

Box with 30 tissues

Caja con 30 pañuelos

Size: 185x157mm

1375-GL

Box with 25 gloves

Caja con 25 guantes

Size: 185x157mm

10350-GP

Box with tissues & gloves

Caja con pañuelos y guantes

Size: 230x115x60mm

PP-1300GL

Box with 50 tissues & 12 gloves

Caja con 50 pañuelos y 12 guantes

Size: 230x125x110mm

Soft tissues boxes (2 plies).
Boxes of latex gloves,
vinyl or nitrile.

CAJAS DE PAÑUELOS EXTRA SUAVES
(DOBLE CAPA). CAJAS CON GUANTES
DE LÁTEX, VINILO O NITRILO.

10350-GP



1375



PP-1300GL



1375-GL



Tissues & Gloves

Health Care

10300



10300

Box with 100 tissues
Caja con 100 pañuelos
Size: 233x110x50mm

10400

Box with 25 gloves
Caja con 25 guantes
Size: 150x70x35mm

CM-400

Box with 25 ties faces mask
Caja con 25 mascarillas con cintas
Size: 180x100x60mm

CK-402

Box with 50 tissues
Caja con 50 pañuelos
Size: 175x120x35mm

CMB-410

Box with 50 earloop faces mask
Caja con 50 mascarillas con gomas
Size: 240x75x20mm

CM-400



CK-402

CMB-410



10400



Soft tissues boxes (2 plies).
Boxes of latex gloves,
vinyl or nitrile
Boxes with face masks
CAJAS DE PAÑUELOS EXTRA SUAVES
(DOBLE CAPA). CAJAS CON GUANTES
DE LÁTEX, VINILO O NITRILO
CAJAS CON MASCARILLAS



HEALTH CARE

DIAGNOSTIC

MEDICAL SPECIALTIES

How much can you
spend for the kit?
¿CUÁNTO PUEDE GASTARSE
PARA EL BOTIQUÍN?

1505

CPR mask
Mascarilla para boca a boca

1506

CPR mask
Mascarilla para boca a boca

310-3

Cotton
Algodón

310-8

Tweezers
Pinzas

310-11

Latex gloves (pair)
Par guantes

310-12

Bandage
Venda

315-4

Gauze
Gasas

607

Scissors
Tijera

93101

Adhesive tape
Esparadrapo

S-210

Alcohol wipe
Toallita alcohol

S-220

Povidone wipe
Toallita povidona iodada

S-230

Anti-mosquitos wipe
Toallita repelente mosquitos

SUE-1

Hydrochorite
of sodium
Monodosis suero fisiológico

P-800

Eye patch
Parche ocular

PS-510

Stery- trip
Punto de sutura

TI-300

5 plasters,
size 70x20mm
*5 tiritas, medidas
70x20mm*

TP-30

Ear tips
Tapones oído



310-3

310-11

93101

PS-510

310-12

310-8

SUE-1

1505

607

1506

TP-30

First aid Kit

EN-300



BB-120



EN-320



BB-329



EP-204

EP-200

EP-201

Make your First Aid Kit at your convenience. Choose your packaging. HAGA SU BOTIQUÍN A MEDIDA Y ESCOJA ESTUCHE

BB-320

Mini first aid kit
Botiquín bolsillo

BB-329

Travel first aid kit: 1 bandage, pair latex gloves, 1 scissors, tweezer, adhesive tape, 4 plasters, gauze pad, 2 soap napkins, 2 alcohol wipe, 2 NaCl 0,9%
Botiquín de viaje: 1 venda, 1 par de guantes, tijera, pinza, esparadrapo, 4 tiritas, gasas, 2 toallitas jabonosas, 2 toallitas de alcohol, 2 monodosis suero fisiológico

Size: 155x100x50mm

EN-300

Mini first aid kit: 2 bandages, pair latex gloves, 1 scissors, adhesive tape, gauze pad, 3 alcohol wipe.
Botiquín: 2 vendas, 1 par de guantes, tijera, esparadrapo, gasas, 3 toallitas de alcohol

Size: 90x45x102mm

EN-320

Mini first aid kit: 2 bandages, pair latex gloves, 1 scissors, 2 plasters, gauze pad, 2 alcohol wipe.
Botiquín bolsillo: 2 vendas, 1 par de guantes, tijera, 2 tiritas, gasas, 2 toallitas de alcohol

Size: 55x30x115mm

EMPTY CASES
ESTUCHES VACIOS

EP-200

EP-201

EP-204



Diagnostic



596

593-D



593-C



593



593

Anodized aluminium diagnostic penlight
2 batteries R-03 included.
Linterna diagnóstico de aluminio anodizado
2 pilas R-03 incluidas.

Size: Ø12x141mm

593-D

Diagnostic penlight with tongue depressor
adaptor (without tongue depressor)
Anodized aluminium penlight
2 batteries R-03 included.
Linterna diagnóstico con portadepresor (sin depresor)
Linterna de aluminio anodizado
2 pilas R-03 incluidas.

Size: Ø12x141mm

596

Aluminium penlight with LED light
Linterna aluminio con luz LED

Size: Ø14x132mm

593-C

Diagnostic penlight with cobalt filter
Anodized aluminium penlight
2 batteries R-03 included.
Linterna diagnóstico con filtro de cobalto
Linterna de aluminio anodizado
2 pilas R-03 incluidas.

Size: Ø12x141mm

Logo printed on the body
GRABACIÓN DEL LOGO EN EL CUERPO

Penlight



EP-109



C-590
C-591



590

591

Diagnostic

EP-109

Diagnostic set: Penlight, 5 tongue depressors and tongue depressor adaptor (D-2)
Set diagnóstico: linterna, 5 depresores y portadepresor (D-2)

Size: 169x52x25mm

C-590

C-591

Diagnostic set: oval or rectangular penlight with adaptor \varnothing 20 tongue depressors
It can be used with wooden tongue depressors

*Set diagnóstico: linterna ovalada o rectangular con adaptador y 20 depresores
Puede ir con depresores de madera*

Size: 184x140x30mm

590

Rectangular penlight with tongue depressor adaptor.
It can be used with wooden tongue depressors
*Linterna con adaptador para depresor rectangular
Puede ir con depresores de madera*

Size: 70x40x23mm

591

Oval penlight with tongue depressor adaptor
It can be used with wooden tongue depressors
*Linterna con adaptador para depresor ovalada
Puede ir con depresores de madera*

Size: 70x40x20mm

Economic & practical diagnostic sets

SETS DE DIAGNÓSTICO ECONÓMICOS Y PRÁCTICOS



CP-104

Frosted pocket set:

Penlight, otoscope & 3 ear-tips

Estuche de bolsillo translúcido: Linterna, cabezal otoscopio y 3 espéculos

Size: 169x52x25mm

EP-104

Diagnostic set:

Penlight, otoscope & 3 ear-tips

Estuche diagnóstico: Linterna, cabezal otoscopio y 3 espéculos

Size: 169x52x25mm

EP-107

Diagnostic set:

Penlight & cobalt filter

Widely used in ophthalmology

Estuche diagnóstico: Linterna y filtro de cobalto

Muy utilizado en oftalmología

Size: 169x52x25mm

EP-108

Diagnostic set:

Penlight, otoscope, 3 ear-tips & tongue depressor adaptor

Estuche diagnóstico: Linterna, cabezal otoscopio, 3 espéculos y portadepresor

Size: 169x52x25mm



EP-108



EP-104



CP-104



EP-107

Penlight



EP-255



EP-250



EP-110

Diagnostic

EP-110

Diagnostic set: Penlight
Estuche diagnóstico: Linterna

Size: 169x52x25mm

EP-250

Diagnostic set: Penlight, otoscope & 3 ear-tips
Estuche diagnóstico: Linterna, cabezal otoscopio y 3 espéculos

Size: 195x109x32mm

EP-255

Diagnostic set: Penlight, otoscope, 3 ear-tips,
tongue depressor adaptor & cobalt filter

Estuche diagnóstico completo: Linterna, cabezal
otoscopio, 3 espéculos, portadepresor y filtro de cobalto

Size: 195x109x32mm



HEALTH CARE

DIAGNOSTIC

MEDICAL SPECIALTIES

PLASTIC TONGUE DEPRESSORS:

- Flexible
- More resistant than others on the market
- Colors to choose

Each reference with special features as:

- Anti-slidding
- Special for pediatrics
- Ergonomic with a space for finger ...

The individual packaging:

- Transparent film: neutral or printed from 1 up to 4 colors
- White paper film: neutral or printed from 1 up to 4 colors
- Combined paper and transparent film.

DEPRESORES PLÁSTICO:

- Flexibles
- Más resistentes que otros existentes en el mercado
- Colores a escoger

Cada referencia con una particularidad, los hay:

- Antideslizantes
- Especial pediatría
- Ergonómico con endidura para el dedo,...

El embolsado individual:

- Film transparente, neutro o grabado de 1 a 4 colores
- Film de papel grabado de 1 a 4 colores
- Combinado papel y film transparente

Tongue depressors printed with logo, special ink

LA GRABACIÓN DE LOS DEPRESORES SE REALIZA CON TINTA ALIMENTARIA



Tongue Depresors

D-6



D-1

D-2

D-4

D-5

D-7

D-8

D-9

Diagnostic

D-1

145mm

D-2

130mm

D-4

Ergonomic & anti-sleeping
Ergonómico y antideslizante

145mm

D-5

Ergonomic & anti-sleeping.
Special for pediatrics
Ergonómico y antideslizante. Especial para pediatría

125mm

D-6

Assorted child design. Special for pediatrics.
Depresor infantil surtido. Especial para pediatría

130mm

D-7

Anti-slidding
Antideslizante

145mm

D-8

Wood
Madera
150mm

D-9

Wood with sweet in one side.
Special for pediatrics.
*Madera con caramelo en un extremo.
Especial para pediatría*

150mm

Certified in compliance
with CE norms

CUMPLE NORMATIVA EUROPEA

HEALTH CARE

DIAGNOSTIC

MEDICAL SPECIALTIES

503-CD

Box with 10 tongue depressors
Optional: D-1, D-8
Caja con 10 depresores
Opcional: D-1, D-8
Size: 150x27x20mm

C-260

Box with 50 tongue depressors
Optional: D-1, D-7, D-8
Caja con 50 depresores
Opcional: D-1, D-7, D-8
Size: 152x93x32mm

C-270

Box with 24 tongue depressors
Optional: D-1, D-8
Caja con 24 depresores
Opcional: D-1, D-8
Size: 150x65x20mm

C-280

Box with 20 tongue depressors
Optional: D-1, D-8
Caja con 20 depresores
Opcional: D-1, D-8
Size: 150x50x20mm

C-290

Slide dispenser box with 20 tongue depressors
Optional: D-1
Caja dispensadora con 20 depresores
Opcional: D-1
Size: 155x70x20mm

CD-250

Dispenser box with 20 tongue depressors
Optional: D-1, D-4, D-7, D-8
Caja dispensadora con 20 depresores
Opcional: D-1, D-4, D-7, D-8
Size: 165x57x76mm

D1-15C

Frosted box with 15 tongue depressors
Optional: D-1
Caja translúcida con 15 depresores
Opcional: D-1
Size: 150x38x20mm



Tongue Depresors

Diagnostic



PF-554



D1-F

418-PD



418-PD

All references can be filled with flavoured or non flavoured plastic tongue depressors

TODOS LAS REFERENCIAS PUEDEN TENER DEPRESORES CON O SIN OLOR (SÓLO DEPRESORES DE PLÁSTICO)

Empty capsule

Optional: D-1, D-2, D-4, D-6, D-7

Cápsula vacía

Opcional: D-1, D-2, D-4, D-6, D-7

Size: Ø64x150mm

EP-270

Rigid plastic box with 12 tongue depressors

Optional: D-1, D-8

Estuche rígido con 12 depresores

Opcional: D-1, D-8

Size: 170x53x26mm

D1-F

15 tongue depressors in plastic pouch

Optional: D-1, D-7, D-8

15 depresores en funda

Opcional: D-1, D-7, D-8

Size: 75x150mm

PF-554

Empty chemist flask

Optional: D-1, D-2, D-4, D-5, D-6, D-7, D-8

Pote farmacia vacía

Opcional: D-1, D-2, D-4, D-5, D-6, D-7, D-8

Size: Ø58x178mm

EP-270



626

Digital flexible thermometer

Termómetro digital flexible

Size: 120x20x10mm

628

Digital flexible thermometer

Termómetro digital flexible

Size: 120x20x10mm

GM-40

Glucose monitor

Glucómetro

Size: 48x105x22mm

4050-TF

Othoscope - Ophthalmoscope

Otoscopio - Oftalmoscopio

RP-750

Chiropody ruler

Regla de podología

RP-912

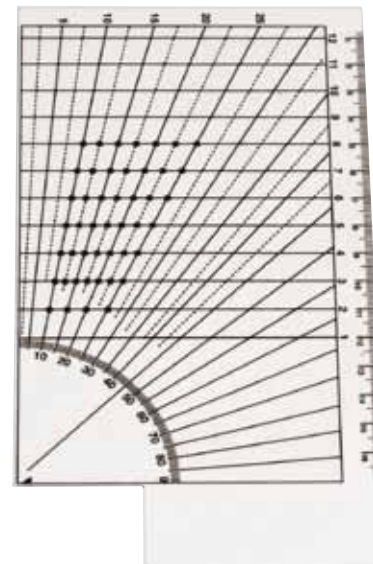
Chiropody ruler

Regla de podología

RP-750



RP-912



GM-40



626



628



4050-TF



Ear Tips



C-10



ESP-50



CD-401



CDE-50



G-15



Diagnostic

Normally used by
otolaryngologist & pediatrics
UTILIZADO NORMALMENTE POR
OTORRINOLARINGOLOGOS Y PEDIATRAS

C-10

Box with 10 ear-tips
Caja con 10 espéculos
Size: 80x40x25mm

C-15

Box with 28 ear-tips
Caja con 28 espéculos
Size: 80x70x25mm

CD-401

Box with 20 tongue depressors & 20 ear-tips
Caja con 20 depresores y 20 espéculos
Size: 152x93x32mm

CDE-50

Dispenser box with 50 ear-tips
Caja dispensadora con 50 espéculos
Size: 100x75x65mm

ESP-50

50 ear-tips in polybag
Bolsa con 50 espéculos

CDE-50

Nasal speculum
Espéculo nasal



Monofilament: A preliminary diagnosis of sensorial neuropathy in diabetes

What is a monofilament?
This is a tool that can be used to detect a patient's ability to perceive moderate pressures in peripheral parts of the body and has proven to be predictive for foot ulceration risk. In fact, it is a form or a way of "pre-screening" to test possible functional changes in large sensorial fibres.

MONOFILAMENTO: UN DIAGNÓSTICO PRELIMINAR DE LA NEUROPATÍA SENSORIAL EN LA DIABETES.

¿QUÉ ES UN MONOFILAMENTO?
ES UNA HERRAMIENTA QUE PUEDE DETECTAR LA CAPACIDAD DE UN PACIENTE PARA PERCIBIR PRESIONES MODERADAS EN LAS PARTES PERIFÉRICAS DEL CUERPO Y HA DEMOSTRADO SER PREDICTIVO PARA EL RIESGO DE ULCERACIÓN DEL PIE. DE HECHO, ES UNA CARACTERÍSTICA O FORMA DE "PRE-SCREENING" PARA DETECTAR POSIBLES CAMBIOS FUNCIONALES EN LAS FIBRAS SENSORIALES.

1801

Monofilament "Sensi-Test"

Packaging: flow-pack or carton pouch
Monofilamento "Sensi-Test"

Presentación: flow-pack o en funda cartón

Size: 130x15x10mm



Sensi-Test



1801

Monofilament

Diagnostic



1810



1804



The filament of 5.07 has been accepted as the medical standard to show the minimum level of protective sensation on the foot. The necessary pressure to bend it, is 10gr. (+-5% standard deviation)

EL FILAMENTO 5.07 HA SIDO ACEPTADO COMO EL ESTÁNDAR MÉDICO PARA MOSTRAR EL NIVEL MÍNIMO DE SENSACIÓN PROTECTORA EN EL PIE. LA FUERZA DE PRESIÓN REQUERIDA PARA DOBLARLO ES DE 10GR (+-5% DESVIACIÓN ESTÁNDAR)

1810

4 Monofilament spare parts
4 recambios de monofilamento

Size: 120x20x10mm

1804

Diptych monofilament
Díptico monofilamento

Size: 65x65mm

European Quality
CALIDAD EUROPEA

Certified in compliance
with CE norms
CUMPLE NORMATIVA EUROPEA



Endocrinology

022

Tape meter with automatic rewind button.

Metro con botón de recogida automático.

Size: 57x57x12mm
150cm

026

Obesity tape meter with automatic rewind button.

Metro corporal con botón de recogida automático.

Size: Ø50mm - 150cm

035

Cranometer

Medidor de cabeza

Size: 66x10mm

106

BMI calculator.

Medidor de la masa corporal.

Size: Ø165mm

1901

Skinfold caliper

Medidor de grasa

Size: 165x100mm

40200

BMI calculator.

Medidor de la masa corporal.

Size: Ø165mm

1901



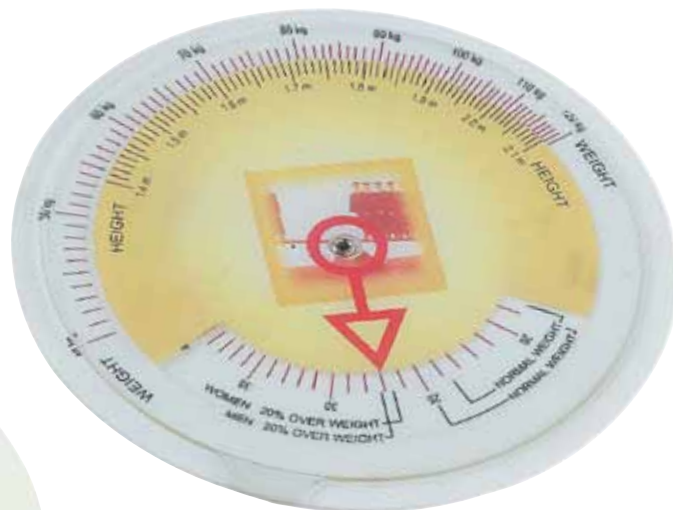
40200



035



106



022



026



BMI

Diagnostic



024



023



40100



026-BMIC

027-BMI



026-BMI



024
Tape meter with automatic rewind button.
Metro con botón de recogida automático.
Size: 60x60x15mm - 150cm

026-BMIC
Obesity tape meter. BMI calculator & white tape
Metro obesidad. Calculadora BMI y cinta blanca.
150cm

023
Tape meter with automatic rewind button.
Metro con botón de recogida automático.
Size: Ø50mm - 150cm

027-BMI
Obesity tape meter. BMI calculator & colourful tape depending on risk.
Metro obesidad. Calculadora BMI y cinta colores según el riesgo.
Size: Ø70mm - 150cm

026-BMI
Obesity tape meter. BMI calculator & white tape
Metro obesidad. Calculadora BMI y cinta blanca.
Size: Ø70mm - 150cm

40100
Obesity tape meter. BMI calculator & white tape
Metro obesidad. Calculadora BMI y cinta blanca.



IF-30

Stethoscope identifier
Identificador de fonendoscopio

Size: 43x30x15mm

IF-35

Heart shape stethoscope identifier
Identificador de fonendoscopio en forma de corazón

PF-200

Disposable stethoscope protector (single use)
Adhesivo protector campana fonendoscopio (desechable)

Size: 60x75x15mm

SP-25

Stethoscope support
Soporte para fonendoscopio

Size: 60x85x10mm



PF-200



SP-25



IF-30



Stethoscope Cover

Diagnostic



20175

20180



CD-255



The stethoscope cover used especially by pediatrics:
Contact with the child's skin is not as cold
More hygienic

EL CUBREFONENDO SE UTILIZA ESPECIALMENTE EN PEDIATRÍA:
CONTACTO CON LA PIEL DEL NIÑO NO ES TAN FRÍO MAS HIGIÉNICO

20175

Box with 25 stethoscope covers
Caja con 25 cubrefonendos

Size: 105x62mm

20180

Polybag with 25 stethoscope covers
Bolsa con 25 cubrefonendos

Size: 110x70x20mm

CD-255

Dispenser box with 25 stethoscope covers
Caja dispensadora con 25 cubrefonendos

Size: 75x65x100mm

The stethoscope covers are single use
LOS CUBREFONENDOS SON DESECHABLES (UN SOLO USO)

HEALTH CARE

DIAGNOSTIC

MEDICAL SPECIALTIES



Medical Specialities



ES-145

In trauma these
tools are very useful
EN TRAUMATOLOGÍA ESTAS
HERRAMIENTAS SON MUY ÚTILES

792

Visual analogue pain scale ruler
Regla para el análisis del grado de dolor del paciente
Size: 150x45x5mm

793

Goniometer with pain scale ruler
Goniómetro con regla del dolor
Size: 203x45x7mm

794

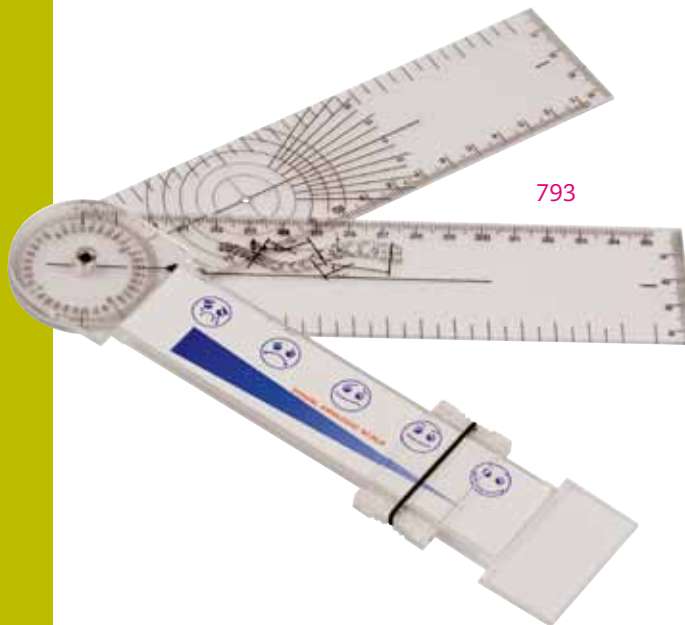
Goniometer with pain scale ruler
Goniómetro con regla del dolor
Size: 203x45x7mm

ES-145

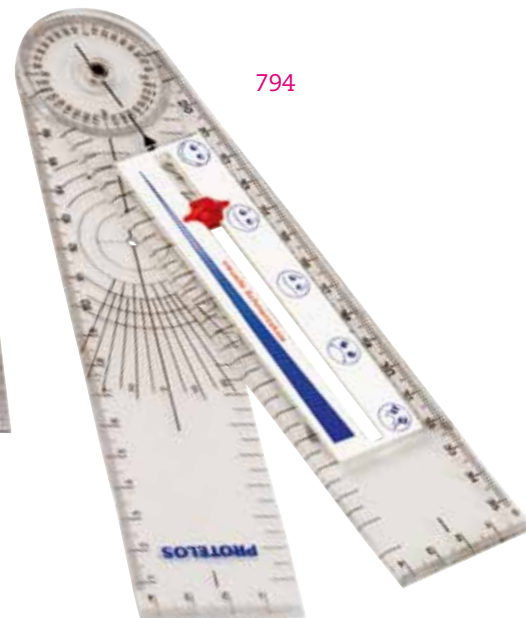
"Taylor" hammer
Martillo "Taylor"
Size: 180x50mm



792



793

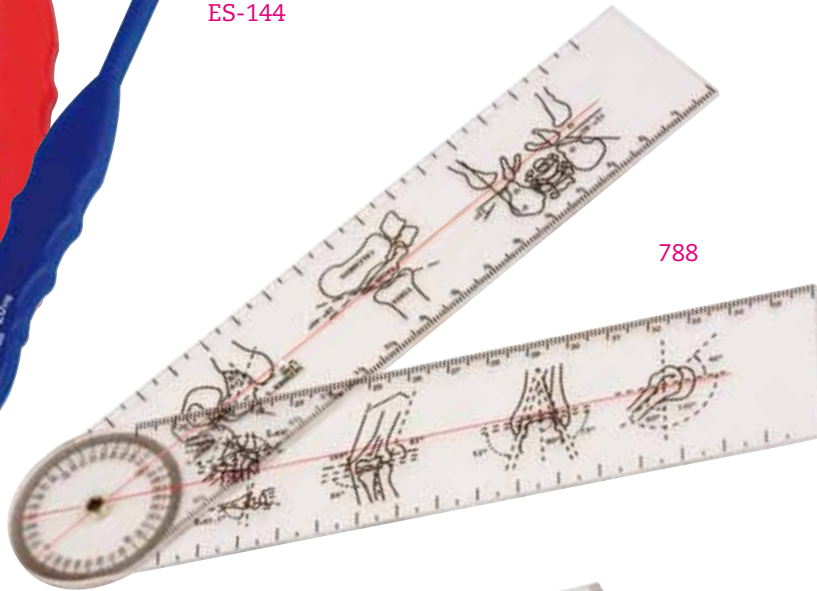


794

Traumatology



ES-144



788



790
791

Medical Specialities

788

Trumatology goniometer
Goniómetro traumatología
Size: 203x45mm

790

Goniometer
Goniómetro
Size: 203x45x7mm

791

Flexible goniometer
Goniómetro flexible
Size: 203x45x7mm

ES-144

Silicone "Buck" hammer
Martillo "Buck" de silicona
Size: 210x70mm

The rules can be
packaging in flow-pack
The hammer can
packaging in velvet pouch

LAS REGLAS SE PUEDEN
PRESENTAR EN FLOW-PACK
EL MARTILLO SE PUEDE PRESENTAR
CON FUNDA DE ANTELÍNA

HEALTH CARE

DIAGNOSTIC

MEDICAL SPECIALITIES



14601

Extensible "Queen" hammer
with screwing head

Martillo "Queen" extensible con cabeza giratoria

ES-143

"Buck" hammer

Martillo "Buck"

Size:175x60mm

ESG-146G

"Queen" hammer
with screwing head

Martillo "Queen" con cabeza giratoria



14601

ES-143

ESG-146G



Traumatology



439-TR

439

B-050

RC-200

20310



Medical Specialities

439/439-TR

Calyper

Pie de rey

Size:210x75mm

20310

Pocket negatoscope

Negoscopio portatil

Size:250x160x20mm

B-050

X-ray schalk holder

Portatizas para escribir en radiografias

Size:Ø12x122mm

RC-200

X-ray marker

Rotulador para escribir en radiografias

Size:Ø12x131mm



HEALTH CARE

DIAGNOSTIC

MEDICAL SPECIALITIES

107

Heart risk factor calculator.

Gives an indication of heart attack risk taking into account blood pressure, years of smoking and other factors

Disco del riesgo cardiovascular.

Indica la posibilidad de riesgo coronario según los parámetros: presión, tabaco,...

Size: Ø150mm

40160

Flexible ECG ruler

Regla flexible cardiología

Size: 160x60mm

R-794C

Flexible ECG ruler

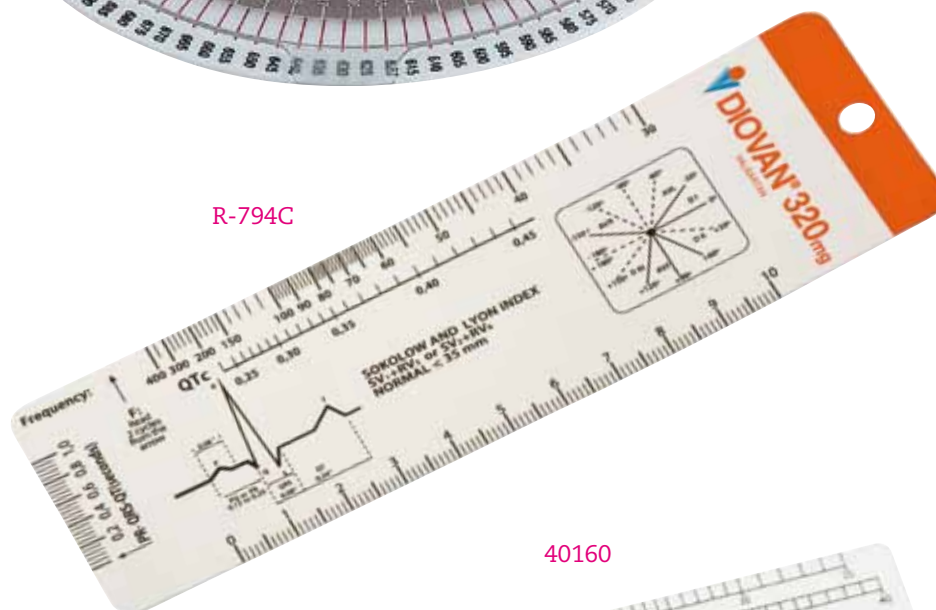
Regla flexible cardiología

Size: 155x50mm

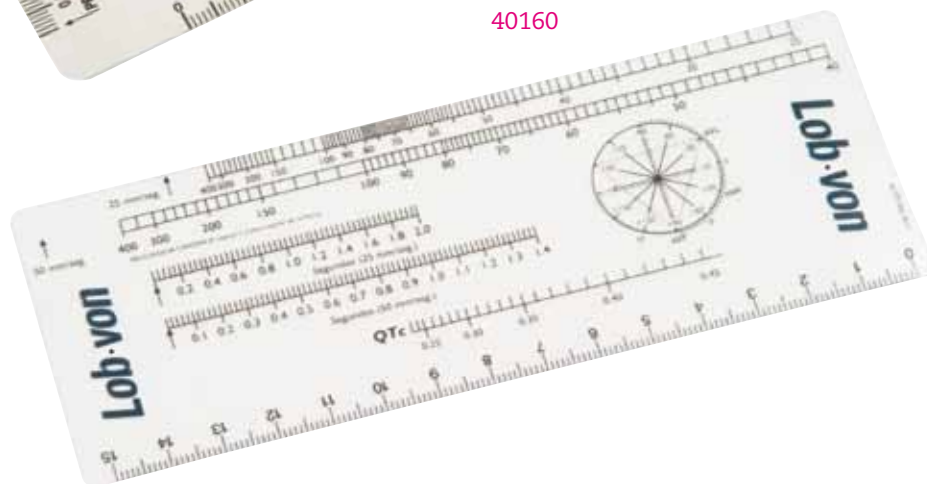
107



R-794C



40160



Cardiology

795



115



115

Caliper & measurement of coronary risk.
Percentage probability of a coronary attack
within 10 years. Based on the updated
information of the coronary risk profile
taken from the Framingham study.
Pie de rey y medidor del riesgo coronario.
Probabilidad porcentual de accidente coronario en 10
años. Basado en una actualización del perfil de riesgo
coronario extraída del estudio Framingham.

Size:178x67x7mm

795

Cardiological ruler with meter
incorporated for ECG calculation.
Includes positioning drawing
in several measuring scales.
Regla de cardiología con escala
métrica ECG para valoración de ciclos.

Size:180x40x7mm

798

ECG caliper with clip
Compás cardiológico con clip

Size:122x10mm

798



799-B



799-B

ECG caliper
Compás cardiológico

Size:122x10mm

To calculate ECG it is neces-
sary a a caliper & ECG ruler
PARA CÁLCULO ECG ES NECESARIO UN
COMPÁS Y UNA REGLA CARDIOLOGÍA



028

Kid meter with head support
Adhesive for hanging on the wall included.

Tallímetro de pared junior con cursor deslizante

Incluye adhesivos para colgarlo a la pared

Box size: 160x60mm

Meter size: 190cm

The tape measure &
box can be personalized
SE PUEDE PERSONALIZAR TANTO LA
CAJA COMO EL TALLÍMETRO

KID METER



028



Pediatrics

Baby meter

027

Baby meter with head & feet support

Tallímetro para bebé con cursor

deslizante en pies y cabeza

Box size: 160x60mm

Meter size: 85cm



027

026

Tape meter with rewind button. 150cm
Metro corporal con botón de recogida. 150cm

Size: 65x90x20mm

031

Dinosaur tape meter. 150cm
Metro dinosaurio. 150cm

Size: 80x5mm

035

Cranometer. 150cm
Medidor de cabeza. 150cm

Size: 66x10mm

417-BB

Child's design tourniquet
Torniquete infantil

Size: 66x10mm

BTI-80

Canister baby wipes
Bote infantil dispensador toallitas

PL-300

Flea comb. Is used to remove lice and nits
Peine liendrero. Se utiliza para retirar piojos y liendres

Size: 80x5mm



031



026

035



417-BB



BTI-80



PL-300



Pediatrics

Medical Specialities



MI-40



626-I



BS-80



CC-20



626-I
Digital flexible thermometer
Termómetro digital flexible
Size: 138x20x10mm

BS-80
Child sponge
Esponja infantil

MI-40
Valved holding chamber for used with
metered dose inhalers. 3 mask sizes to choice.
Inhalador infantil. 3 medidas de boquilla a escoger.

CC-20
Baby pacifier holder
Cadena sujeta chupete
Size: 66x10mm

HEALTH CARE

DIAGNOSTIC

MEDICAL SPECIALITIES

BI-200

5 bibs single use in polybag
Bolsa con 5 Baberos desechables

FCI-90

Cold pack
Pack frío

PB-300

Baby scale protector
Protector balanza infantil

PB-520

Non-woven baby scale protector
Protector balanza infantil en non woven



PB-300
PB-520



FCI-90



BI-200



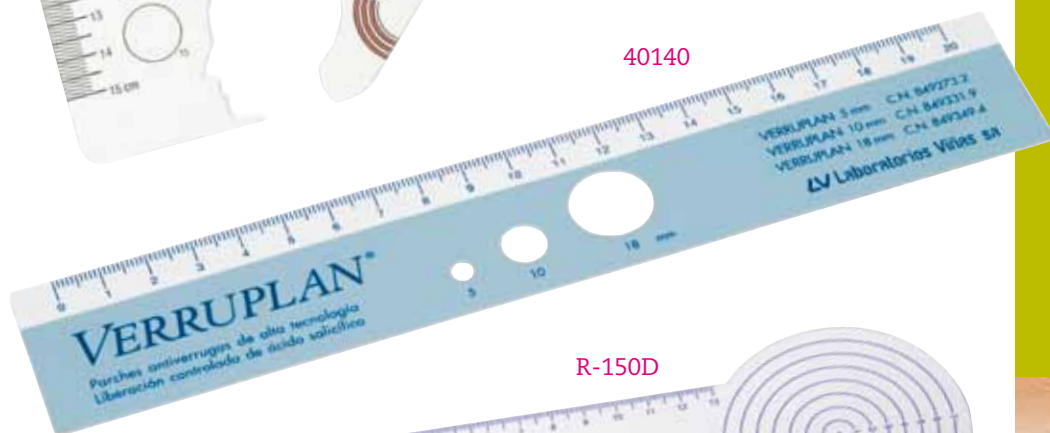
Dermatology



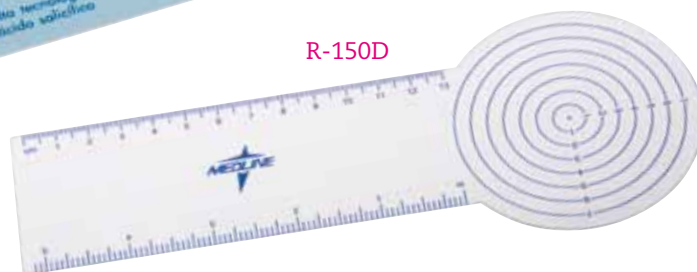
RD-120



LUP-130



40140



R-150D



RD-200



LD-10

Medical Specialities

40140

Dermatologic ruler
Regla dermatológica
Size: 40x220mm

LD-10

Dermatologic pencil
Lápiz para dermatología

LUP-130

Dermatologic magnifying glass
Lupa dermatológica
Size: 130x35x45mm

RD-120

Dermatologic ruler
Plantilla dermatológica
Size: 190x110mm

R-150D

Dermatologic ruler
Regla dermatológica
Size: 210x80mm

RD-200

Dermatologic marker
Rotulador dermatología
Size: 140x10mm

HEALTH CARE

DIAGNOSTIC

MEDICAL SPECIALITIES



417

Tourniquet with
buckle fastening
*Torniquete con cierre
de plástico*

Size: 550x25mm

417-BB

Child's design tour-
niquet with buckle
fastening
*Torniquete infantil con
cierre de plástico*

Size: 405x25mm

617

Bandage scissors
Tijera corta vendas

Size: 145x70x5mm

617-C

Scissors chain holder
Muelle para tijeras

637

Scissors
Tijera

620

Needle collector
Desechador de agujas

Size: 80x30x110mm

40520

Injection pad
*Almohadilla de prácticas
(enfermería)*

Size: 85x75x34mm

40540

Injection pad
*Almohadilla de prácticas
(enfermería)*

Size: 123x80x30mm

Small tools very
useful in nursing
PEQUEÑOS UTENSILIOS
MUY ÚTILES EN ENFERMERÍA



Nursing

Medical Specialities

PC-300



PC-130



112

Pocket protector
Salvabolsillo
Size: 90x150mm

GC-20F

Surgical cap for women
Gorro cirugía mujer
Size: 290x100mm

GC-20M

Surgical cap for men
Gorro cirugía hombre
Size: 80x100mm

PC-130

Fitted stretcher cover
Protector pies camilla

PC-300

Paper protector for examination table
Protector para camilla

GC-20M



GC-20F



436

Cutter in opaque colours
Cutter con protección

436-F

Pharmacy cutter
Cutter farmacia

40530

Box with sterile gauzes
Caja con gasas estériles
Size:115x105x102mm

MS-10

Face mask dispenser (10 units)
Dispensador de mascarillas (10 unidades)
Size:58x178mm

PC-25

Adhesive tape dispenser
Porta esparadrapo de papel
Size:115x105x102mm

PF-552

Chemist flask with cotton balls
Bote de farmacia con algodones
Size:58x178mm



40530



PF-552



PC-25



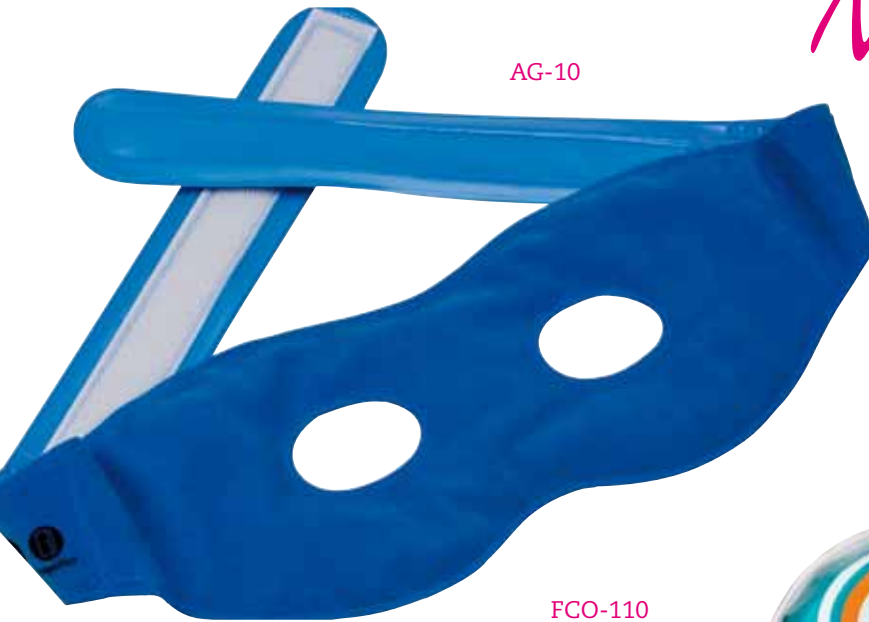
MS-10

436



436-F

Nursing



AG-10



FCC-100



FCO-110



FCI-90



FC-80

Medical Specialities

AG-10

Hot/cold eye mask
Antifaz frío-calor

FC-80

Hot/cold pack with cover
Pack frío-calor con funda

Size: 200x100x10mm

FCC-100

Hot/cold pack
Pack frío-calor redondo

Size: 120mm

FCI-90

Cold pack
Pack frío

Size: 140x100x50mm

FCO-110

Eye cold pack with cover
Pack frío para los ojos

Size: ø 85x105mm



120

Ophthalmologic ruler
Regla oftalmológica
Size: 180x25x4mm

140

Ophthalmologic ruler
Regla oftalmológica
Size: 195x40mm

160

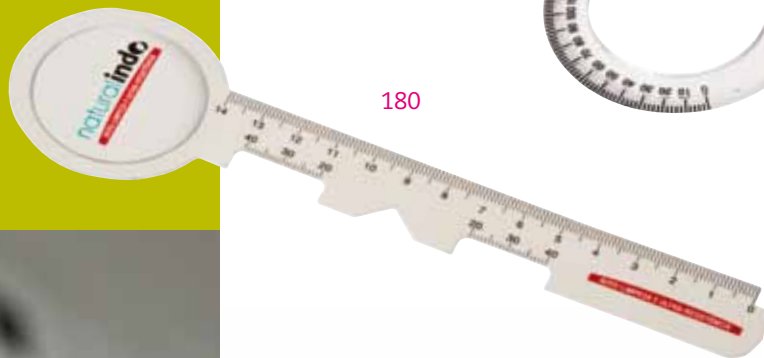
Ophthalmologic ruler
Regla oftalmológica
Size: 170x60mm

R-170F

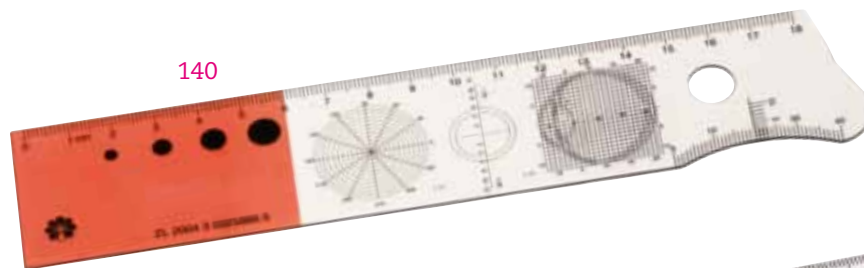
Ophthalmologic ruler
Regla oftalmológica
Size: 170x90mm

180

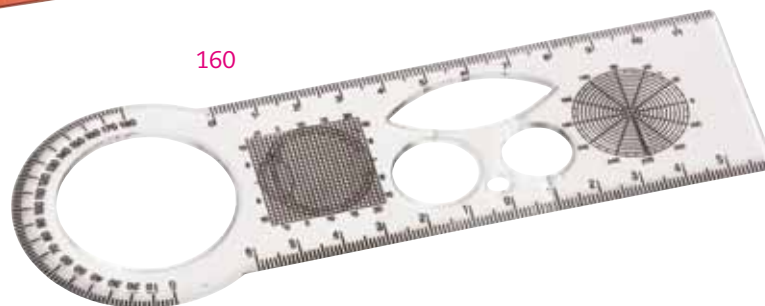
Ophthalmologic ruler
Regla oftalmológica
Size: 188x55mm



180



140



160



120

R-170F



Ophthalmology

Medical Specialities

RF-447



P-800



447

Eye occluder

Estenopeico

Size: 170x200x3mm

P-800

Eye patch

Parche ocular

RF-447

Eye occluder

Estenopeico

447



HEALTH CARE

DIAGNOSTIC

MEDICAL SPECIALITIES



417-V

Tourniquet with buckle fastening
Torniquete con cierre de plástico

CV-20

Pet cover cone
Collarín perros

PV-110

Fitted table cover
Protector de mesa veterinario

TM-15

Wet wipes dog's pack
Toallitas higiene perros

RV-100

Veterinary ruler
(displasia)
*Regla veterinaria
(displaxia cadera)*

Veterinary

CV-20



PV-110



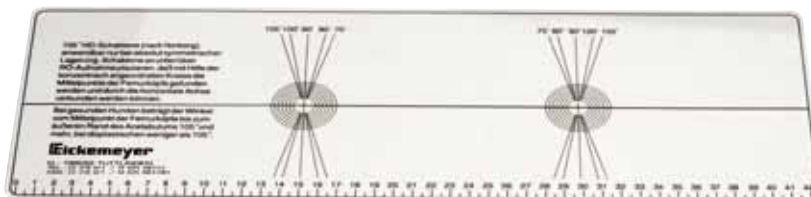
417-V



TM-15



RV-100



Dentist

Medical Specialities

CB-30



B-320B



102



CT-750



CE-300



102

Small dentist mirror

Espejo dentista

Size: 160x5mm

B-320B

Personalized Dentist bibs (5pcs in polibag)

Baberos dentista personalizados (bolsa 5 pzs)

Size: 175x22mm

CB-30

Box with 5 personalized dentist bibs

Baberos dentista personalizados (caja 5 pzs)

Size: 175x120x25mm

CE-300

Ejector box

Caja eyectores

Size: 160x80x20mm

CT-750

Box with dental cotton rolls

Caja con torundas



HEALTH CARE

DIAGNOSTIC

MEDICAL SPECIALITIES

Spirometry

40250-P

PEF calculator disk

Disco medidor PEF

Size: Ø7mm / Ø11mm

ER-3000

Respiratory exerciser

Ejercitador respiratorio

Size: 135x145x67mm

ESP-100

Nasal speculum

Espéculo nasal

MF-510

Pocket peak flow

Medidor de flujo respiratorio

Size: 150x60x35mm

PI-50

Nose clip

Pinza nariz

R-20PF

PEF calculator ruler

Regla medidora PEF



MF-510



40250-P



PI-50



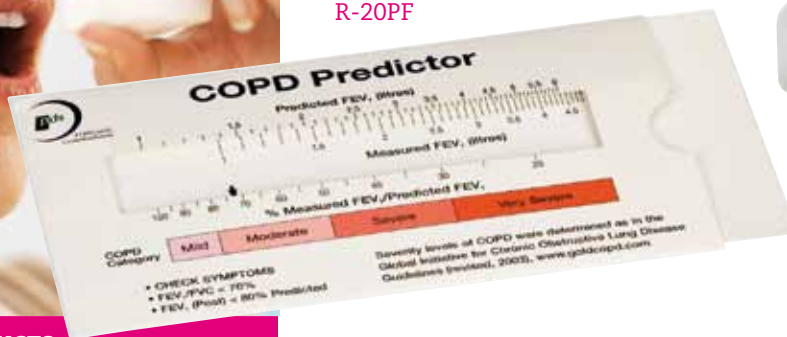
ER-3000



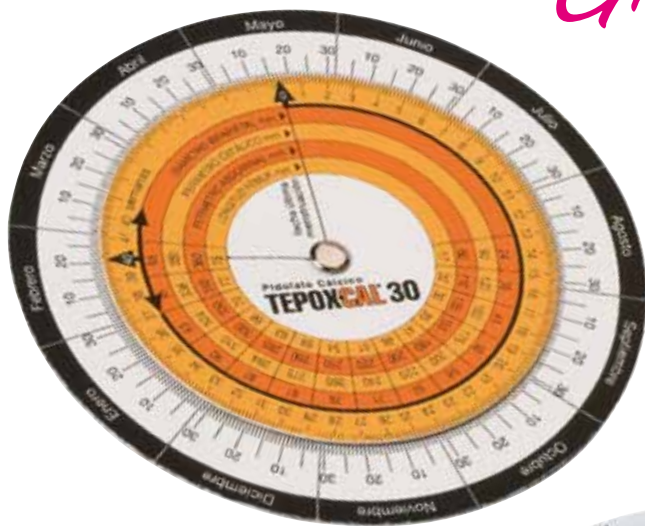
ESP-100



R-20PF



Ginecology



110-P



108



109

Medical Specialities

108

108

Pregnancy calculator. Used by obstetricians & doctors to check the length of pregnancy from last period.

Disco embarazo. Utilizado por los ginecólogos para comprobar el tiempo de embarazo desde el último periodo.

Size: Ø160mm

109

Desk pregnancy calculator.

Used by obstetricians & doctors to check the length of pregnancy from last period. 50 pages

Disco embarazo sobremesa.

Utilizado por los ginecólogos para comprobar el tiempo de embarazo desde el último periodo.

50 hojas para anotar al paciente información

110-P

Flexible pregnancy calculator. Used by obstetricians & doctors to check the length of pregnancy from last period.

Disco embarazo flexible. Utilizado por los ginecólogos para comprobar el tiempo de embarazo desde el último periodo.

Size: Ø110mm / Ø80mm



500

The cardiovascular risk calculator helps the doctor to evaluate the probability of suffering a cardiovascular attack. Based on the different risk factors & tables of the Framingham Heart Study

Calculadora del riesgo cardiovascular que evalúa la posibilidad de sufrir un accidente cardiovascular. Basado en diferentes riesgos y tablas del estudio Framingham

Size: 120x50x14mm

500



525

BSA calculator

Calculadora BSA

Size: 111x65mm

526

BMI calculator

Calculadora masa corporal

Size: 123x70mm

526



527

Creatinine calculator

Calculadora de creatinina

Size: 123x70mm

528

Pregnancy calculator

Calculadora de embarazo

Size: 123x70mm

525



527



528



There are many more calculators. Consult.
HAY MUCHAS MÁS CALCULADORAS. CONSULTENOS.

Anatomy



Anatomical models MODELOS ANATÓMICOS

Cardiovascular system
Respiratory system
Urinary system
Diabetes demonstration model
Eye model
Teeth model
Skin model
Ear model, ...

SISTEMA CARDIOVASCULAR
SISTEMA RESPIRATORIO
SISTEMA URINARIO
MODELO DEMOSTRACIÓN DIABETES
MODELO DEL OJO
MODELO DEL DIENTE
MODELO DE PIEL
MODELO DE OÍDO, ...

Check for other anatomical models
CONSULTAR PARA OTROS MODELOS ANATÓMICOS

M-115

Medical kit. 5 pieces

Maletín médico compuesto por 5 piezas

Size: 320x250x55mm

HB-30A

Head stethoscope

Fonendoscopio

Size: 80mm

HS-30B

Double head stethoscope

Fonendoscopio doble campana

Size: 80mm

PO-80C

Oximeter with LCD colour

Pulsioxímetro pantalla LCD a color

Size: 66x36x33mm

M-115



HS-30B



HS-30B



HB-30A



Surgical



2056R



5099R



5070R



4061R

Medical Specialities

Riester

2056R

Otoscope
Otoscopio

4061R

Classical stethoscope with precision double chest-piece of aluminium.
Fonendoscopio clásico con pieza de contacto doble precisión, en aluminio.

5070R

Diagnostic penlight made of metal with 2,2V vacuum lamp.
Linterna de diagnóstico metálica con lámpara de vacío de 2,2V.

5099R

Diagnostic halogen lamp 2,5V. Including a tongue blade holder: vacuum lamp.
Linterna de diagnóstico con luz halógena de 2,5V. Con porta-depresor.

HEALTH CARE

DIAGNOSTIC

MEDICAL SPECIALITIES



114

Velcro case surgical
Estuche cirugía

Size: 225x90x10mm

EP-125

Surgical instruments
set. 5 pieces
*Set cirugía menor. 5 piezas
hacer inoxidable*

Size: 193x105x30mm

ES-141

Diapason
Diapasón

Size: 200x33mm

ET-8047

Lister scissors in
paper cover

Tijera Lister en góndola

Size: 18mm

ET-9000L

Scissors mayo egar
Tijera mayo egar

Size: 135x70mm

EP-125



ES-141



114



ET-8047



ET-9000L



PROMOTIONAL GADGETS



Index

- 68-69 Clips, pins, elastics bands & special markers
- 70-71 Pen holders
- 72-73 Document holders
- 74-75 Capsules
 - Marker, ball pen, clip dispenser, ...
- 76 Bones
 - Marker, ball pen, clip holder
- 77 Erasers
- 78-79 Tubes & syringues
 - Marker & ball pen
- 80-81 Pills
- 82-83 Bottles & games
- 84 Empty cases

Index

20207

Polibag w-20 bone paper clips
Bolsa de 20 clips hueso

20209

Polibag w-20 heart paper clips
Bolsa de 20 clips corazón

20211

Polibag w-20 foot paper clips
Bolsa de 20 clips pie

20213

Polibag w-20 lung paper clips
Bolsa de 20 clips pulmon

20215

Polibag w-20 tooth paper clips
Bolsa de 20 clips diente

20260

Printed box with paper clips
Caja con clips
Mds/Size: 70x50x20 mm.



20213

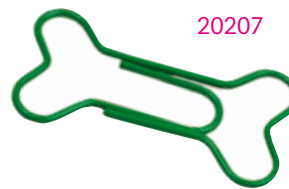
20209



20211



20207



20215



20260



Stationery



GS-100



CH-30



GE-50



CH-30

Small box with colored pins
Cajita con chinchetas de colores

GE-50

Elastic bands box
Caja con gomas elásticas

GS-100

Shaped elastic bands
Gomas elásticas con formas

RI-250

Marker with magnet
Rotulador iman

Mds/Size: Ø 13 x 90mm

RDB-300

Money detector
Detector de billetes falsos

Mds/Size: Ø 10 x 135 mm

RDP-350E

Money detector
Detector de billetes falsos

RB-100

Erasable marker
Marcador con borrador

Mds/Size: Ø 15 x 145 mm



RB-100



RDP-350E

RDB-300



RI-250



20500

Metal pen pot holder

Portalápices metálico

Mds/Size: 103x70 mm.

20510

Metacrilate pen pot holder

Portalápices espiral en metacrilato

Mds/Size: 95x60 mm.

P-418

Capsule pen holder.

Cápsula portalápices

Mds/Size: Ø 65x145 mm



20510

P-418

20500

Pen Holders

DP-418



PL-830



20505

Heart pen pot holder
Portálápiiz en forma de corazón

Mds/Size: 87x83x80 mm.

20515

Stomach pen pot holder
Portálápiiz en forma de estómago

Mds/Size: 95x80x84 mm.

DP-418

Capsule post-it dispenser
Cápsula dispensadora de post-it

Mds/Size: Ø 65x145 mm

PL-830

Pen holder
Portálápices

20505



20515



40300

File holder

Dosier

40350

Plastic file holder

Portadocumentos

CCP-300

A4 - 4 ring file holder

Carpesano con anillas

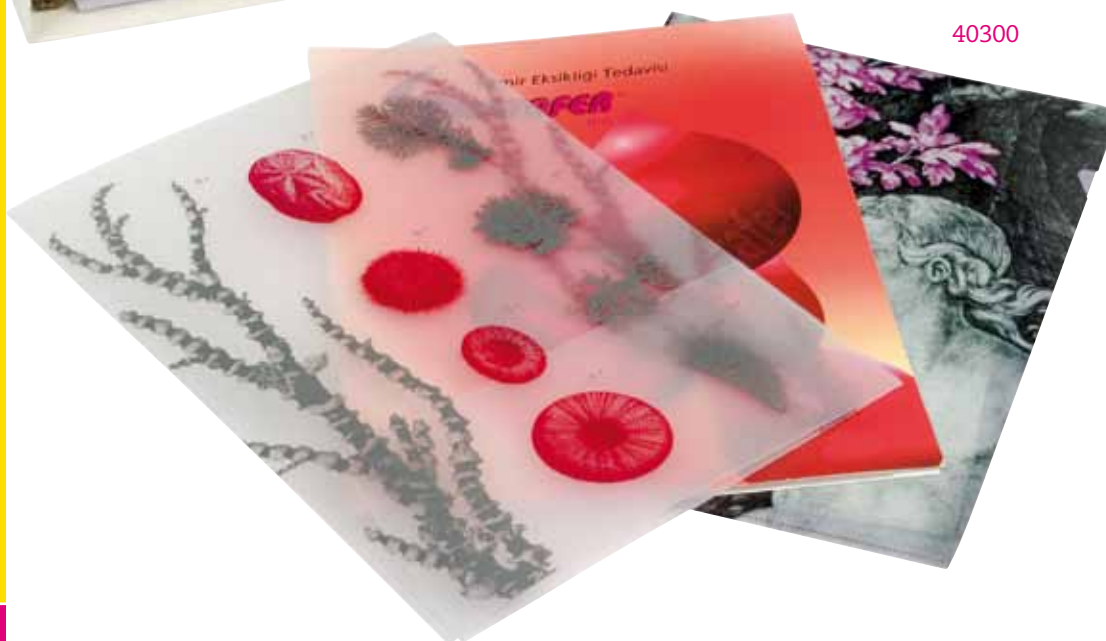
40350



CCP-300



40300



Folders

CP-710



CP-710

Hard cover notepad
and post-it
Carpeta con block de notas y post-it.

CI-507

File holder with magnet
Carpeta con iman sujeta hojas

CI-507



418-PC

Capsule paper clip dispenser. 24 metallic clips

Cápsula dispensadora de clips. 24 clips metálicos

Mds/Size: 30 x 30 x 80 mm

418-T

Capsule marker

Cápsula trazador

Mds/Size: Ø 30 x 85 mm

418-B

Capsule ball pen

Cápsula bolígrafo

Mds/Size: Ø 30 x 85 mm

800

Grille of 6 tube clips in white colour

Parrilla de 6 clips tubo blancos

Mds/Size: 107 x 79 mm.

CE-804

Paper clip dispenser with
12 paperclips in printed box

Caja impresa con flocado dispensador de 12 clips cápsula

Mds/Size: 107 x 34 x 22 mm.



418-PC



418-T

418-B



CE-804



800





418-PN



418-A



904



418-MG



BCC-990



Capsules

418-A

Air freshener capsule
Cápsula ambientador
Mds/Size: Ø 30 x 90 mm.

418-MG

Capsule eraser and pencil-sharpener.
White eraser.
Cápsula set goma-sacapuntas. Goma blanca.
Mds/Size: Ø 30 x 75 mm

418-PN

Capsule paper clip holder
Cápsula sujeta-notas
Mds/Size: Ø 30 x 160 mm.

904

Magnifying glass with capsule
clip and ruler (80 mm).
Lupa clip cápsula con regla de 80 mm.
Mds/Size: 124 x 14 x 10 mm

BCC-992

Hanging capsule ball pen
Cápsula bolígrafo colgador
Mds/Size: Ø 28 x 151 mm

422-THU

Bone marker

Hueso trazador.

Mds/Size: Ø 14 x 145 mm

470-BHU

Bone ball pen

Bolígrafo hueso.

Mds/Size: Ø 14 x 145 mm

20205

Bone paper clip holder

Hueso pinza

Mds/Size: 60 x 30 mm

BCH-986

Hanging bone ball pen

Bolígrafo colgador hueso

Mds/Size: Ø 14 x 150 mm

BCH-990C

Hanging femur bone ball pen

Bolígrafo colgador hueso "femur"

TCH-986

Hanging bone marker

Hueso colgador trazador

Mds/Size: Ø 14 x 145 mm



BCH-990C



470-BHU



422-THU

BCH-986



20205



Erasers



1004



20405



20415



20410



1003



1007



1009



G-423



G-415



20400



470-GHU

470-GHU

Eraser bone
Hueso goma.

Mds/Size: 150x15 mm.

1003

Aspirin eraser
Goma aspirina

1004

Heart eraser
Goma corazón

Mds/Size: 53x55 mm

1007

Pill eraser
Tableta goma

Mds/Size: 60x25x10 mm.

1009

Eraser box shape.
Goma en forma de caja.

Mds/Size: 73x43x22 mm

20400

Nose eraser
Nariz goma

Mds/Size: 60x30 mm

20405

Bottle eraser
Botella goma

20415

Drop eraser
Gota goma

20410

Brain eraser
Cerebro goma
Mds/Size: 63x54 mm

G-415

White tube
eraser with label
*Tubo goma blanca
con etiqueta*

Mds/Size: Ø 22x 135mm.

G-423

Eraser Syringe
Jeringa Goma.

Mds/Size: Ø15x137mm.

B-412

B-422

B-424

R-415

Tube ball pen.

Tubo boligrafo.

Mds/Size: Ø 22 x 137 mm.

T-412

T-422

T-424

B-415

Tube marker

Tubo trazador

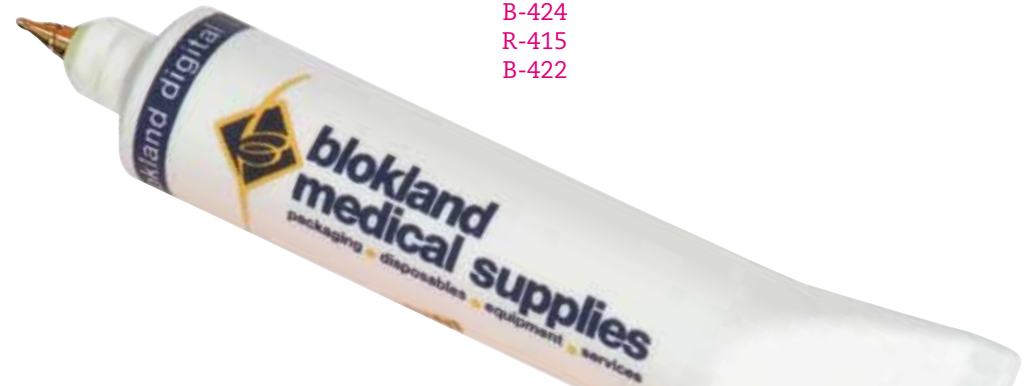
Mds/Size: Ø 22 x 137 mm.

B-412

B-424

R-415

B-422



T-412

T-424

B-415

T-422



T-412
B-412

T-424
B-424

T-422
B-422

B-415
R-415



Syringes

599

LED syringe keyring
Linterna llavero jeringuilla

Mds/Size: 100 x 20 mm.

T-423A

Syringe marker with clip.
Jeringuilla trazador con clip.

Mds/Size: Ø 15 x 137 mm

T-423

Syringe marker
Jeringuilla trazador.

Mds/Size: Ø 15 x 137 mm

TBJ-17

Syringe ball pen. Blue ink.
Jeringuilla bolígrafo. Escritura azul.

Mds/Size: Ø 11 x 127 mm.



T-423

TBJ-17

T-423A



117

Ruler -30 cm- with paper holder.
Regla de 30 cm con papel publicitario

429-AB

Double phial marker.
Vial doble trazador.

Mds/Size: Ø 18 x 145 mm

870

Paper clip dispenser. 24 metallic clips.
Dispensador de clips. 24 clips metálicos.

Mds/Size: 130 x 68 x 14 mm.

1020

Aspirin paper-clip dispenser. 24 metallic clips.
Aspirina dispensadora de clips. 24 clips metálicos.

Mds/Size: Ø 70 x 34 mm.

1020



429-AB



117



870





416-B



TI-508



416-P



1081



TP-506



416-T



416-B

Pill ball pen
Tableta bolígrafo

Mds/Size: 34 x 84 x 22 mm.

416-P

Pillbox
Tableta pastillero

Mds/Size: 34 x 84 x 22 mm.

416-T

Pill marker
Tableta trazador

Mds/Size: 34 x 84 x 22 mm.

1081

Pill magnet
Magneto tableta

Mds/Size: 70 x 7 x 32 mm.

TP-506

Pill post-it dispenser -3M-
Dispensador de post-it (3M)

Mds/Size: 100 x 40 x 17 mm.

TI-508

Pill paper clip dispenser. 24
metallic clips.
*Tableta dispensadora de clips. 24
clips metálicos.*

Mds/Size: 100 x 40 x 17 mm.

419

Marker
Trazador

420

Ball pen
Bolígrafo

421

Pencil sharpener
Sacapuntas

MA

Ampoule cap.
Tapón vial

MC

Collyrium cap.
Tapón colirio

MJ

Syrup cap.
Tapón jarabe.

MNC

Nasal cap.
Tapón nasal circular

MNP

Oval nasal cap
Tapón nasal oval

MNP



MNC



MJ



MC



MA



420



419



421



437



433

Intestine ball game. 6 balls.
Juego de habilidad intestino. 6 bolas.

Mds/Size: 114 x 114 x 9 mm

434

Heart ball game. 6 balls.
Juego de habilidad corazón. 6 bolas.

Mds/Size: 114 x 114 x 9 mm

434



435

Head ball game. 6 balls.
Juego de habilidad cerebro. 6 bolas.

Mds/Size: 114 x 114 x 9 mm.

433



437

Lung ball game. 6 balls.
Juego de habilidad pulmón. 6 bolas.

Mds/Size: 114 x 114 x 9 mm.

435



438-OI

Ear ball game. 6 balls.
Juego de habilidad aparato auditivo. 6 bolas.

Mds/Size: 114 x 114 x 9 mm.

438-OI



EP-200

Empty pocket PVC case.
Estuche PVC de bolsillo (vacío).

EP-201

Empty medium PVC case.
Estuche PVC mediano (vacío).

Mds/Size: 195 x 105 x 30 mm.

EP-202

Empty small PVC case.
Estuche PVC pequeño (vacío).

Mds/Size: 170 x 53 x 26 mm.

EP-204

Empty big PVC case.
Estuche PVC grande (vacío).

Mds/Size: 257 x 176 x 38 mm.

EP-205

Empty compact PVC case.
Estuche PVC compacto (vacío).

Mds/Size: 142 x 142 x 45 mm.



EP-204

EP-205



EP-200



EP-201



EP-202



Authorizations & Certificates



TÜV certificates:
ISO 22716:2007
ISO 9001:2008

AEMPS authorizations:
Serial manufacturing of health products.
Cosmetic products, toothpastes, hygiene and disinfectants
Clinic scope disinfectants and intact skin antiseptics.
Pesticides for personal hygiene.

CERTIFICADOS TÜV:
ISO 22716:2007
ISO 9001:2008

AUTORIZACIONES AEMPS:
FABRICACIÓN EN SERIE DE PRODUCTOS SANITARIOS.
PRODUCTOS COSMÉTICOS, DENTÍFRICOS, DE HIGIENE Y DESINFECTANTES.
DESINFECTANTES EN EL ÁMBITO CLÍNICO Y ANTISÉPTICOS DE PIEL INTACTA.
PLAGUICIDAS DE USO EN HIGIENE PERSONAL.

The text 'PH AD' is rendered in a bold, 3D, sans-serif font. The letters are white with a thick black outline and a slight drop shadow, giving them a three-dimensional appearance. They are positioned in the lower right quadrant of the page, superimposed on a dynamic splash of water. The water splash is composed of numerous small, white, translucent droplets and larger, more defined splashes, creating a sense of movement and energy. The background of the splash is a mix of white and light grey, contrasting with the dark background of the rest of the page.

PH
AD